

SPEAK FOR THE WOODS

The New Jersey Woodland Stewards Program
is sponsored by:

Rutgers Cooperative Extension
Natural Resources Conservation Service
New Jersey Forestry Association
New Jersey State Forestry Services
New Jersey Div. of Fish and Wildlife



The objective of the New Jersey Woodland Stewards Program is to develop a group of people who embrace a forest stewardship ethic, who want to learn more about sustainable forest management, and are willing to share what they learn with others.

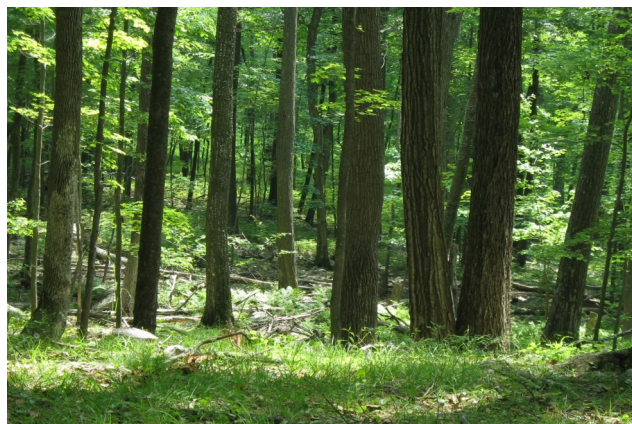
REGISTRATION FEE

The \$75 registration fee for the 3 1/2 day program includes all meals, lodging, supplies, handouts, indoor meeting areas, and study in the surrounding forest.

In return, each participant will volunteer 30 hours promoting Forestry in New Jersey.

SPEAKERS REPRESENT

- ◆ Rutgers Cooperative Extension
- ◆ New Jersey State Forestry Services
- ◆ New Jersey Div. Fish & Wildlife Service
- ◆ Natural Resource Conservation Service
- ◆ New Jersey Forestry Association
- ◆ Consulting Foresters
- ◆ USDA Forest Service
- ◆ Woodlot Owners
- ◆ New Jersey Tree Farm Association
- ◆ New Jersey Audubon Society
- ◆ New Jersey Soil Conservation Districts



For an application or further information
on the next Woodland Stewards Program
contact:

New Jersey Forestry Association
P.O. Box 367

Flemington, NJ 08822

Email: info@njforestry.org

Phone: 908.832.2400

www.njforestry.org

New Jersey Woodland Stewards Program

A volunteer forestry
education program



Speak for the Woods

A program for those who embrace
a forest stewardship ethic,
who want to learn more about
sustainable forest management,
and are willing to share
what they learn with others.

LOCATION

The Program is scheduled for 3 1/2 days
in the third week of October at the

Linwood MacDonald YMCA Camp
1 Flatbrook Road, Sandyston, NJ,
by Stokes State Forest in Sussex Co.

The Program starts with registration on Thursday
at 4:30 - 5:15 p.m. with dinner served at 6:00 p.m.
and ends on the following Sunday at 3:15 p.m.

PROGRAM

Thursday Arrival Registration 4:30 to 5:15 pm

- ◆ Dinner
- ◆ Welcome, Introductions, Orientation & Overview
- ◆ New Jersey Forest History
- ◆ Forest Landowner Objectives

Friday

- ◆ Breakfast
- ◆ Forest Ecology
- ◆ Silviculture and Forest Management
- ◆ Identifying Management Interests and Objectives for the Woodlot
- ◆ Wildlife Ecology
- ◆ Technical Assistance for Forest Landowners
- ◆ Lunch
- ◆ Field Session: Tour the Host's Woods
Discuss the Ecological Concepts in the Forest
and Hands-on Use of Forest Measurement Tools
- ◆ Dinner
- ◆ Preserving Family Lands
- ◆ Non-Timber Forest Products



PROGRAM (Continued)



Saturday

- ◆ Breakfast
- ◆ Wildlife Habitat Management
- ◆ Lunch
- ◆ Developing a Forest Management Plan
- ◆ Marketing Forest Products
- ◆ Field Session: Discuss Wildlife and Forest Management in the Forest Setting
- ◆ Dinner
- ◆ Legal Issues for Forest Landowners
- ◆ Non-native Invasive Plants in NJ Forests



PROGRAM (Continued)



Sunday

- ◆ Breakfast
- ◆ Interaction of Forests and Water Quality
- ◆ Woodland Stewards Program Goals
- ◆ Volunteer Opportunities
- ◆ Volunteer Planning and Action Plans
- ◆ Action Plan Reports
- ◆ Round Table Discussions
- ◆ Lunch
- ◆ Tree Identification. Indoors and in the Field
- ◆ Evaluations and Wrap-up. Finish by 3:15 p.m.



Lake Robert Rooke



This is the logo for the On-line Newsletter
for New Jersey Woodland Stewards Program